



Certificate of Analysis

CANNABUSINESS LABORATORIES, LLC

Customer:

Treatibles
6339 Charlotte Pike #914

Nashville, TN 37209

Received Date **2/16/2024**

COA Released **2/22/2024**

Comments

Sample ID **240216006**

Order Number **CB240216003**

Sample Name **AD 1500mg Cinnamon Tincture**

External Sample ID

Batch Number **021524-09**

Product Type **Edible**

Sample Type **Edible**

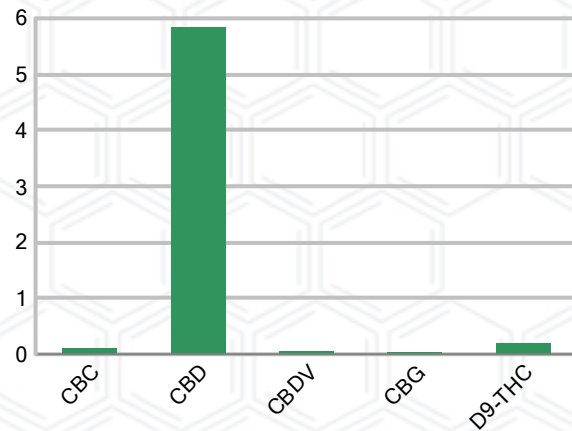
CANNABINOID PROFILE

Analyte	LOQ (%)	% Weight	mg/mL
CBC	0.01	0.099	0.923
CBD	0.01	5.849	54.40
CBDa	0.01	ND	ND
CBDV	0.01	0.056	0.518
CBG	0.01	0.037	0.344
CBGa	0.01	ND	ND
CBN	0.01	ND	ND
d8-THC	0.01	ND	ND
d9-THC	0.01	0.195	1.811
THCa	0.01	ND	ND
Total Cannabinoids		6.236	57.99
Total Potential THC		0.195	1.811
Total Potential CBD		5.849	54.40
Total Potential CBG		0.037	0.344
Ratio of Total Potential CBD to Total Potential THC			30.00 : 1
Ratio of Total Potential CBG to Total Potential THC			0.19 : 1

SAMPLE IMAGE



CANNABINOIDS % Weight



*Total Cannabinoids refers to the sum of all cannabinoids detected.

*Total Potential CBD = (0.877 x CBDa) + CBD. *Total Potential THC = (0.877 x THCa) + THC. *Total Potential CBG = (0.877 x CBGa) + CBG.

*Total Potential THC/CBD are calculated to take into account the loss of an acid group during decarboxylation.



J. Hobgood
Laboratory Manager

SIGNATURE

Jamie Hobgood

LABORATORY MANAGER

02/22/2024 12:57 PM

DATE

This product has been tested by CannaBusiness Laboratories using validated testing methodologies and a quality system. Values reported relate only to the product tested. CannaBusiness Laboratories makes no claims as to the efficacy, safety, or other risks associated with any detected or non-detected levels of any compounds reported herein. This Certificate shall not be reproduced except in full, without the written permission of CannaBusiness Laboratories. Photo is of sample received by the lab and may vary from final packaging. The results apply to the sample as received.



Certificate of Analysis

CANNABUSINESS LABORATORIES, LLC

Customer

Treatibles
6339 Charlotte Pike #914
Nashville, TN 37209



Sample Name: AD 1500mg Cinnamon Tincture
Sample ID: 240216006
Order Number: CB240216003
Product Type: Edible
Sample Type: Edible
Received Date: 02/16/2024
Batch Number: 021524-09
COA released: 02/22/2024 12:57 PM

Potency (mg/mL)			
Date Tested: 02/21/2024		Method: CB-SOP-028	
Instrument:			
0.195 %	5.849 %	6.236 %	57.99 mg/mL
Total THC	Total CBD	Total Cannabinoids	Total Cannabinoids

Analyte	Result	Units	LOQ	Result	Units
CBC (Cannabichromene)	0.099	%	0.010	0.923	mg/mL
CBD (Cannabidiol)	5.849	%	0.010	54.40	mg/mL
CBDa (Cannabidiolic Acid)	ND	%	0.010	ND	mg/mL
CBDV (Cannabidivarin)	0.056	%	0.010	0.518	mg/mL
CBG (Cannabigerol)	0.037	%	0.010	0.344	mg/mL
CBGa (Cannabigerolic Acid)	ND	%	0.010	ND	mg/mL
CBN (Cannabinol)	ND	%	0.010	ND	mg/mL
D8-THC (D8-Tetrahydrocannabinol)	ND	%	0.010	ND	mg/mL
D9-THC (D9-Tetrahydrocannabinol)	0.195	%	0.010	1.811	mg/mL
THCa (Tetrahydrocannabinolic Acid)	ND	%	0.010	ND	mg/mL



J. Hobgood
Laboratory Manager

Jamie Hobgood

02/22/2024 12:57 PM

SIGNATURE

DATE

NT = Not tested, ND = Not detected; LOQ = Limit of Quantitation; <LOQ = Detected; >ULOL = Above upper limit of linearity; CFU/g = Colony forming units per 1 gram; TNTC = Too numerous to count

This product has been tested by CannaBusiness Laboratories using validated testing methodologies and a quality system. Values reported relate only to the product tested. CannaBusiness Laboratories makes no claims as to the efficacy, safety, or other risks associated with any detected or non-detected levels of any compounds reported herein. This Certificate shall not be reproduced except in full, without the written permission of CannaBusiness Laboratories. Photo is of sample received by the lab and may vary from final packaging. The results apply to the sample as received.